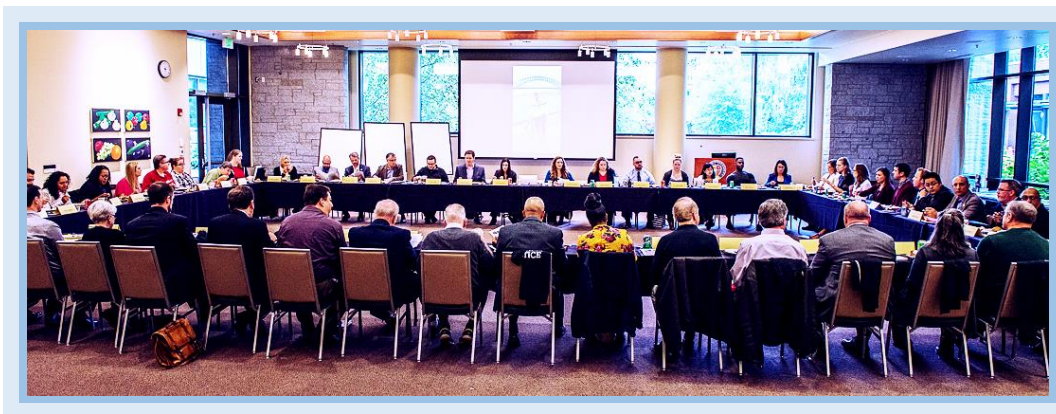


## Seattle University Criminal Justice Advisory Committee *2016 Annual Report*

### Advisory Committee Overview and Contributions

The Seattle University Criminal Justice Department Advisory Committee is now in its 13<sup>th</sup> year. The committee has grown to over 100 members representing 46 agencies. Our department's collaboration with this group of local, state, federal, and private criminal justice representatives is unprecedented in terms of providing opportunities for students to link theory, research, and practice through applied research and service in criminal justice agencies. The Seattle University Department of Criminal Justice Advisory Committee is the largest and most active of its kind and is a fundamental and integrated part of our department. Committee members and agencies collaborate with us to offer federal agency practicum courses, internships and research assistantships, inform academic curriculum, programs, and continuing education, and provided students access to career opportunities through collaborative projects, networking and mentorship. Committee members play a central role in developing collaborative research and service initiatives that engage students in evidence-based practice and get them in the door for career placement. Through these opportunities, students are exposed to the broad range of career possibilities. The existence and involvement of our advisory committee has put our department on the map as the best Criminal Justice Department in the west and one of the most reputable criminal justice departments nationally. Our programs are recognized as being academically rigorous and innovative and our partnerships with local, state, federal, and private agencies are unparalleled. We are grateful to be a part of this incredible community of criminal justice scholars, practitioners, leaders, students, alumni, and faculty who are changing the way justice is done to affect change in the criminal justice system through leadership and decision-making that is ethical, just, and empirically based. We look forward to all that will come in the 2016-17 academic year.



**SEATTLE**

DEPARTMENT OF CRIMINAL JUSTICE

## ADVISORY COMMITTEE MEMBER CONTRIBUTIONS

In 2015-16 advisory committee members:

- Collaborated with faculty and students on grants and research
- Contributed to service learning projects
- Participated in Center for the Study of Crime and Justice initiatives.
- Organized and planned our spring continuing education event.
- Assisted with career nights for freshman advising
- Served as adjunct instructors
- Served as guest speakers in classes and events
- Facilitated special events and forums
- Participated in CJ Club and Honor Society events
- Facilitated federal agency practicum courses
- Served as thesis committee members
- Individually mentored students



## SUMMARY OF LAST YEAR'S MEETING

In our 2015 meeting Greg Hewett, King County Medical Examiner's Office Program Manager was awarded the *Innovation in Criminal Justice Education Award* for his work establishing the KCMEO Internship which has offered over 60-70 SU CJ students paid internship positions over the 15 years it has been in effect. We showcased collaborative research initiatives including the Seattle Police Department Micro-Community Policing Plans, student leaders led a Q&A, we discussed the PhDCJ proposal and what would make the program unique, how to better market our Crime Analysis Certificate Program, and ideas for

continued development of our Center for the Study of Crime and Justice. In our mid-year meeting we showcased a research initiative with US Probation Pretrial Services Western District and discussed our spring Urban Disorder event, the summer CJ Leadership Institute and ideas for new certificates and continuing education.



**SEATTLEU**

DEPARTMENT OF CRIMINAL JUSTICE



# SEATTLE CRIMINAL JUSTICE

## Advisory Committee



# SEATTLE

## DEPARTMENT OF CRIMINAL JUSTICE

## Departmental Update



2016 Incoming BACJ/BSCJ Cohort



2016 Incoming MACJ Cohort

### ENROLLMENT/STUDENT INTEREST

In 2016 we topped last year with an even larger number of entering students (including undergrad, grad, and certificate students). For 2016-17 we have 60 entering undergraduates, 40 entering graduate students, and 7 Crime Analysis Certificate students. As of Fall 2016, we have a total of 271 criminal justice students enrolled in the Criminal Justice Department—171 undergraduates, 100 graduate students (including 21 students who have completed coursework who are working on thesis projects or studying for their comprehensive exams), 12 Crime Analysis Certificate students (including 9 who are co-enrolled in the MACJ program), and 5 students in the MACJ/JD Program. In the undergraduate program 138 students are pursuing the Bachelor of Criminal Justice and 33 students pursuing the Bachelor of Science with the largest incoming freshman and transfer student cohort in years. The most popular undergraduate specializations in 2016-17 are Forensic Psychology (61 BA and 13 BS) (43% of all undergraduate students) and Administration of Justice (37) (22% of all undergraduate students) with the remainder of students spread evenly across the Forensic Science (16 BA and 20 BS) and Criminology/CJ Theory (23) specializations. The graduate program enrollment also increased with the largest-ever incoming class of 40 MACJ. The most popular program specializations in the graduate program are Investigative Criminology (37) (37% of all graduate students) and the MACJ (no specialization) (19) (19% of all graduate students) with the remainder of the students in the Research and Evaluation (5), Victimology (10), and MACJ/JD (5) specializations.

Our undergraduate students come from the Pacific Northwest, California, and from the East Coast and around the country. Our incoming graduate students are from undergraduate programs and criminal justice and social service agencies. 2016 MACJ students are graduates of Arizona State University, Boise State University, California State University-Stanislaus, Central Washington University, Chaminade University of Hawaii, Canisius College, Carnegie Mellon, Colorado State University-Pueblo, Eastern Washington

**SEATTLEU**

DEPARTMENT OF CRIMINAL JUSTICE



University, Florida Southern College, Hawaii Pacific University, Loyola Marymount University, Old Dominion University, Pacific Lutheran University, Portland State University, Roosevelt University, San Francisco State University, Seattle Pacific University, University of California-Irvine, University of Colorado-Boulder, University of Idaho, University of Maine, University of Maryland-College Park, University of Washington-Seattle, University of Washington-Tacoma, Western Washington University, Willamette University, Wisconsin Lutheran College, and professionals with agencies including Department of Social & Health Services, Community Psychiatric Clinic, Northwest Detention Center, Friends of Youth, Pioneer Human Services, and the U.S. Army.

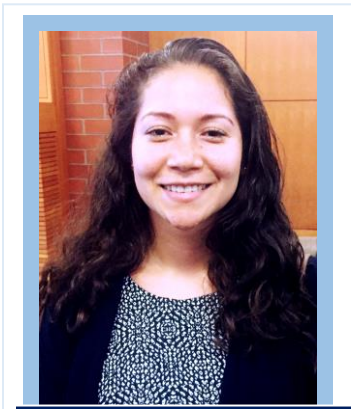
**STUDENT AWARDS**

The undergraduate awards include the *Kelliher Award* for the highest GPA in the major and the *Corr Service & Ethics Award* named for CJ Department co-founder Eugene Corr, former Assistant Police Chief for the Seattle Police Department honors a graduating senior in the Criminal Justice Department undergraduate program who has made significant service and ethics contributions to the criminal justice system. The Kelliher awardees for 2016 were Kabrianna Tamura (BA – Forensic Psychology), Desiree Ender (BA – Forensic Psychology), Jaden Siler (BA – Forensic Psychology Criminology/Criminal Justice Theory, Patricia Colosi (BS- Forensic Psychology). The Corr

Service & Ethics Award went to Nicole Argamosa (BA – Criminology/Criminal Justice Theory).



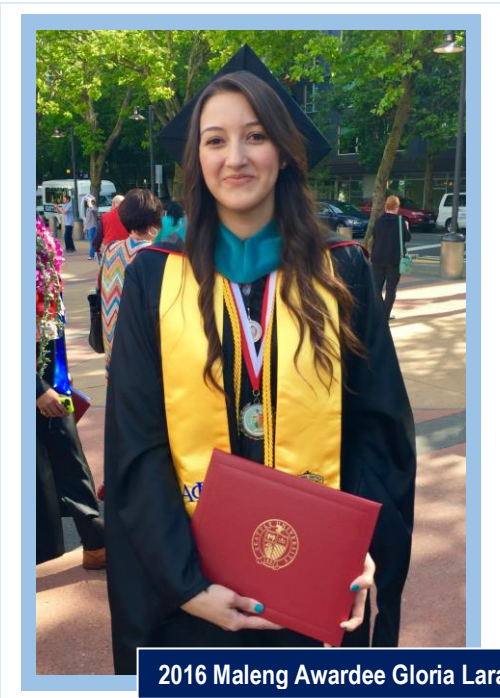
2016 Kelliher Awardees Kabrianna Tamura, Desiree Ender, Patricia Colosi, and Corr Awardee Nicole Argamosa



2016 Corr Scholarship Awardee, MACJ student Yanci Reyes

The 2016 *Corr Scholarship* goes to the incoming graduate student who honors CJ Department co-founder and former Seattle Police Department Assistant Chief Eugene Corr’s vision to increase women and minorities in law enforcement. The 2016 Corr Scholarship was awarded to incoming MACJ student Yanci Reyes. The Corr scholarship award is a one-time award of \$2,500.00.

The 2016 *Norm Maleng Academic Excellence and Citizenship Award* went to Gloria Lara. Gloria worked in 2015-16 as an intern in the Seattle Police Data Driven Unit and was hired full time as a crime analyst with Seattle Police Department Data Driven. The Norm Maleng Academic Excellence & Citizenship Award is awarded to an outstanding graduating student in the Master of Arts in Criminal Justice program. The award is named in honor of Norm Maleng, former King County Prosecutor, who for 30 years was a vocal advocate for reform in criminal justice and introduced many programs in Seattle related to victim's rights and drugs. Norm was a CJ Department Advisory Committee member who was instrumental in inspiring the inclusion of the Victimology Graduate Specialization. Selection is based upon exceptional graduate work in the classroom and service to the community.

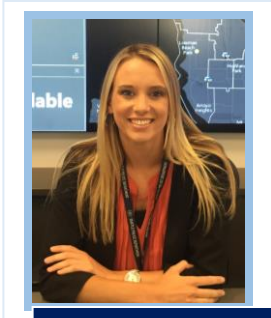


2016 Maleng Awardee Gloria Lara

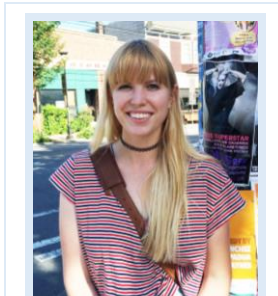
*Criminal Justice Fellowship* recipients for the 2016-2017 academic year are: Kaisha Chu, Amanda Ferguson, Luis Gomez (Pioneer Human Services), Todd Hoagland, Emily Holdeman (Department of Social & Health Services), Kate Koth (Northwest Detention Center), Lauren Morgan, Autumn Murtagh, Susan Nembhard, Tawny Rodgers (Friends of Youth), Megan Thal (Community Psychiatric Clinic), Matthew Todd, and Erika Toth (Washington Department of Corrections).

The *Dr. Marylou Wyse Award* recipients granted by the Graduate Admissions Office provides \$2400 for two academic years for 2016-2017 are Mon-Cheri Barnes and Yanci Reyes.

The *Blume Criminal Justice Scholars Program* has been established through a generous gift to our department from Ann and Bruce Blume to support advances in research and practice at the intersection of criminal justice and mental health. Beginning in 2016, our department will award the Blume Scholarship annually to two students – an undergraduate and graduate student whose academic work, research, and/or service advances scholarship and practice at the intersection of criminal justice and mental health. The Blume Scholarship recipients receive a \$2500 award and will serve as a student members of our department's advisory committee for the academic year they receive the award. The 2016 Blume Criminal Justice



2016 Blume CJ Scholar  
Brooke Bray (MACJ)



2016 Blume CJ Scholar  
Ellary Collins (BA/BSCJ)





**STUDENT ACCOMPLISHMENTS**

*A snapshot of student accomplishments this year:*

- BS Forensic Science student Chelsea Warneke (2014) was hired as a medical investigator at the Snohomish County Medical Examiner’s Office.
- BA-Forensic Psychology student Ellary Collins completed a 6-month internship with the Seattle Police Department’s Crisis Intervention Team Program with SPD Sergeant Dan Nelson.
- Nadine Guyo (BACJ), Tia Squires (MACJ), and Kidst Messelu (MACJ) were hired as Research Assistants on the Seattle Women’s reentry initiative a collaborative project with the Seattle Police Department’s Detective Kim Bogucki’s “IF Project”
- MACJ Students Gloria Lara and Karmen Schuur were hired as a data driven analysts in the Seattle Police Department Data Driven Unit.
- MACJ students Brooke Bray, Jennifer Burbridge, Jessica Chandler, Grace Goodwin, Shannon Ro, Chase



**Chase Yap, Jessica Chandler, Grace Goodwin, Shannon Ro, Brook Bray, Karmen Schuur, Jennifer Burbridge, Gloria Lara**

- Yap and BACJ Joseph Singer worked as Research Assistants/Analysts on the Seattle Police Micro-Community Policing Plans evaluation.
- MACJ student Emily Malterud was hired as a research analyst at the Washington State Criminal Justice Training Commission assisting with the evaluation of the effects of the guardian training in the WA State Basic Law Enforcement Academy.
- MACJ student Bridget Scott was hired by the King County Department of Public Defense SCRAP Division as a Paralegal for the Contempt of Court Unit. This was off of work I was doing since May as an intern for the Special Commitment Unit.



**Beck Strah (MACJ 2010) (currently in the PhD Program at Northeastern in Boston and Emily Malterud (MACJ) are part of a research team evaluating the guardian training at WSCJTC**

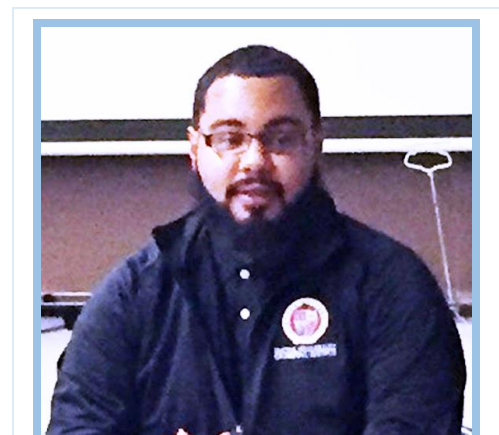
- MACJ students Ray Cowles and Caitie Healing worked with as Research Analysts on the implementation of evidence-based practice at US Probation and Pretrial Services-Western District with Chief Connie Smith. Ray and Caitie presented preliminary results at the SU Graduate Student Research event and will present results at the 2017 Western Society of Criminology conference in Las Vegas in February and the International Congress on Law and Mental Health in Prague in July.



**MACJ students Caitie Healing and Ray Cowles presenting results on their work as research analysts at the USPPS-Western District at the 2016 SU Graduate research event**

- MACJ Student, Tia Squires was accepted into the joint MACJ/J.D. program.
- MACJ Student, Todd Hoagland is interning for the US Postal Inspection Service.
- MACJ student Chelsea Conn-Johnson was hired with Takouba Security a private company that does the background screening for Microsoft.
- MACJ Student Bradley Loetzke was hired as Education Specialist Coordinator with Treehouse an organization dedicated to providing essential and academic support for foster kids.
- MACJ student Lateefah Abdullah was hired with Child Protection Services.
- MACJ student Joe Cooper has been named Assistant Manager of Security Services and Risk Mitigation at the University of Washington Police Department.

- MACJ graduate (2013) Courtney Hopkins was hired as a Criminal Legal Assistant in the Terrorism and Violent Crime Unit at the U.S. Attorney's Office in Seattle.
- MACJ graduate (2013) Katelyn Mitchell was hired as a Postal Inspector in the U.S. Attorney's Office.
- MACJ graduates (2015) Joshua McLeod and Matt Thomas (2016) were hired as officers with the Seattle Police Department.
- MACJ graduate (2016) Christina Averette was hired as a probation officer in Roane County, TN.
- MACJ graduate (2016) Rebecca Postyeni was hired as an investigator in the Habeas Corpus unit (working on death penalty cases) with the Federal Public Defender's office in Phoenix.



**MACJ student Bradley Loetzke was hired as Education Specialist Coordinator at Treehouse for foster children**



**FACULTY/STUDENT/ADVISORY COMMITTEE/AGENCY/ALUMNI COLLABORATION:**

One of the greatest things about our department and the relationships we have developed through the advisory committee are the collaborative research and service we have been able to be involved in. In 2015-16 we engaged in a range of collaborative initiatives that involved students, faculty, CJ agency partners, and alumni. Here is a sampling of the many projects we worked on this year:



- Faculty, students, alumni, and CJ partners presented at national conferences including the *American Society of Criminology*, *Western Society of Criminology*, and the *Academy of Criminal Justice Sciences*. An especially large group attended the 2016 Western Society of Criminology conference in Vancouver, BC including students, faculty, advisory committee members, and criminal justice partners. MACJ students who presented and/or attended the conference include Kalie Nelson, Carol Burciaga-Kirchner, Jessica Chandler, Chase Yap, Emily Malterud, Chelsey Toby, Alex Thomas, Chelsea Conn-Johnson, and others. Faculty members Hickman, Parkin, Rice, Gunnison, and Helfgott, and Vinson also attended along with Seattle Police CIT Sergeant Dan Nelson, Eric Pisconski, and SPD analyst Dr. Jennifer Albright.

- Faculty and students engaged in collaborative grant-funded research including the *Seattle Police Micro-Community Policing Plans Evaluation*, Implementation of the *United States Probation and Pretrial Services Evidence-Based Practice Initiative*, *The Evaluation of the WSCJTC Guardian Training in the Basic Law Enforcement Academy*, evaluation of the *Seattle Police Department's "IF Project" Seattle Women's Reentry Initiative*.
- Students worked with *Sanford, Olson, & Scales* as interns on a national force analysis database.
- Faculty, students, alumni, and advisory committee members co-authored published academic peer-reviewed journal articles and reports.
- Our department hosted our first "Homicide Research-a-thon," the brain-child of Dr. Will Parkin. This was a live data collection event that engaged students in data collection on homicide with guest speakers including members of our advisory committee KCMEO's Dr. Richard Harruff and Victim Support Services Colleen Ingalls)



## CENTER FOR THE STUDY OF CRIME AND JUSTICE

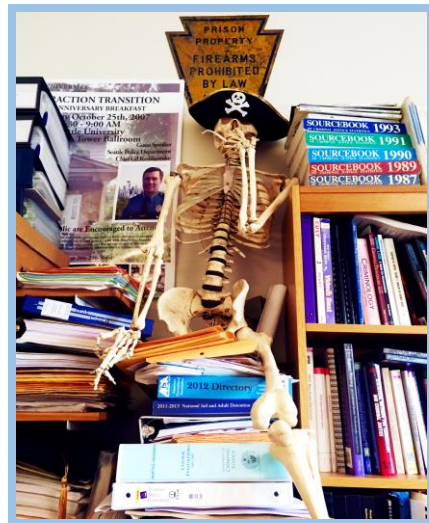
- This year we continued with our tradition of offering a spring one-day continuing education event featuring the topic of Urban Disorder. Unfortunately, we had to cancel our Summer 2016 Criminal Justice Executive Leadership Institute. The spring event brought together undergraduate and graduate students, CJ professionals, and faculty.
- Also this year, our department partnered with the Global Institute of Forensic Research to co-sponsor a continuing education event – “Sex Offender Forensic Assessment, Treatment, and Management.” The event brought professionals in psychology, psychiatry, social work, and criminal justice to discuss the latest research and practice on sex offender assessment, treatment, and management.





**FACULTY HIGHLIGHTS**

We begin 2016 with seven full-time tenure track faculty members, and over 20 adjunct faculty members. A warm welcome new adjunct faculty joining us this year Carmen Rivera from Echo Glen and Colleen Ingalls from Victim Support Services! Colleen is a member of our advisory committee and Carmen graduated from the BACJ-Forensic Psychology in 2010, went on to get her MSc in Investigative Psychology at the University of Liverpool in 2012, and is now working for DSHS/Echo Glen! Sadly, after many years, Brian Stampfl and Dr. Kathy Taylor who have co-taught our *CRJS 465-565 Medico-legal Death Investigation* course will no longer be teaching this course though thankfully will be staying on as advisory committee members!. We will be looking for new co-instructors for this course this year!



**Advisory Committee members and Adjunct faculty Dr. Kathy Taylor and Lt Brian Stampfl have taught the Medico-legal Death Investigation Course for 11 Years. Spring 2016 was their last time teaching this course. It has been a wild ride. Thank you Brian and Kathy for many years of service to our department!**

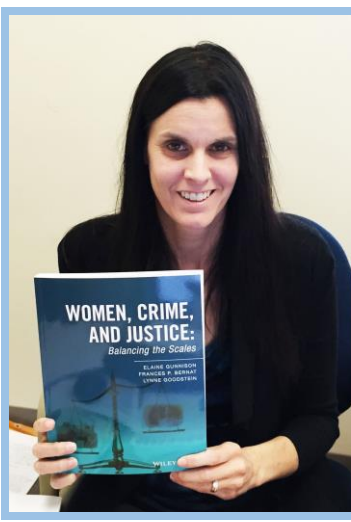


# SEATTLEU

## CRIMINAL JUSTICE

### Advisory Committee

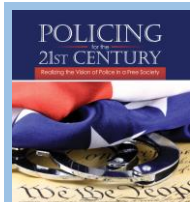
Gunnison is promoted to full professor, publishes a new book *Women, Crime, and Justice*, and is named co-editor (w/Jackie Helfgott) of the *Journal of Criminology, Criminal Justice, Law & Society*,



Hickman is awarded the SU College of Arts & Sciences faculty scholarship award, publishes a new book *Policing in the 21st Century*, and is elected President of the Western Society of Criminology!



Rice publishes with Sue Rahr "From Warriors to Guardians: Reconnecting American Police Culture to Democratic Ideals"



Connor publishes "How to get out of Prison: Views from Parole Board Members" in *Corrections, Policy, Practice, & Research* and Collins publishes with Boruchowitz, Hickman, and Laranga "An Analysis of Economic Costs of Seeking the Death Penalty in Washington and (w/Helfgott) "Behind Bars: Mistaken Release of Inmates Officers Look at Justice Policy in the *Seattle Times*



Parkin publishes "Terrorism in the News: The Efficiency & Impact of Sampling Methods on Data Collection & Content Analysis" in *Studies in Conflict & Terrorism*



Helfgott, Hickman, and Labossiere publish "A Descriptive Evaluation of the Seattle Police Department's Crisis Response Team Officer/Mental Health Partnership Pilot Program" in the *International Journal of Law & Psychiatry*



### Behind the bars: Mistaken release of inmates offers look at justice policy

**T**he release of inmates from prison is a complex process that involves multiple stakeholders, including parole board members, judges, and correctional officers. This article explores the challenges and opportunities associated with this process, drawing on data from a recent study on the economic costs of seeking the death penalty in Washington.

The study found that the economic costs of seeking the death penalty in Washington are significantly higher than those of seeking a life sentence. This finding has important implications for public policy and the criminal justice system as a whole.

The authors argue that a more efficient and effective system for sentencing and sentencing review is needed to reduce these costs and improve the overall quality of the criminal justice system.

### Terrorism in the News: The Efficiency and Impact of Sampling Methods on Data Collection and Content Analysis

William S. Parkin and David A. Goulet

**ABSTRACT** This study examines the most efficient method for sampling data on terrorism. Specifically, when data is assessed electronically through keyword searches and a researcher is not worried about obtaining a specific measure (e.g., number of photographs per newspaper edition), but is instead interested in analyzing a specific topic reported in that medium (e.g., terrorism). The ability to randomly sample a population is important in terrorism studies but only on content analysis of media sources. Two reasons for this are because populations of interest can be large as well as because a requirement of inferential statistics is random sampling. To test sampling efficiency, we used a population of New York Times articles related to terrorism to determine the most efficient single and dual sampling methodology. We found that the constructed week sampling method is most efficient. However, because of the large variation in the number of terrorism contents between 28 and 29 constructed weeks were required before characteristics of the sample adequately

### Seattle University School of Law Digital Commons

Faculty Scholarship

2015

### An Analysis of the Economic Costs of Seeking the Death Penalty in Washington (Report)

Peter A. Collins  
Robert C. Kerschbaumer  
Matthew J. Hickman  
Mark A. Laranga

Follow this and additional works at [Part of the Criminal Law Commons](#)

Recommended Citation  
Collins, Peter A., et al. An Analysis of the Economic Costs of Seeking the Death Penalty in Washington (Report). Seattle University School of Law Digital Commons, 2015.

### How to Get Out of Prison: Views from Parole Board Members

David Boruchowitz  
Connor Collins  
Seattle University, Seattle, Washington, USA

**ABSTRACT** Parole board members are not always seen as the gatekeepers to the criminal justice system. Instead, many inmates remain in prison, before their maximum sentence expires. These individuals are afforded opportunities to live on the outside under the control and legal custody of correctional authorities. Prior to receiving a discharge or parole supervision, however, an inmate often must be granted early release by a parole board.

There are more than 40,000 parolees in America, and this translates into approximately one in every 200 people who are released on parole supervision (Hickman & Boruchowitz, 2014). The parole population continues to be largely male (89%), white (43%), and Black (24%) and is increasing among individuals who are conditionally released from state prisons discharged on parole supervision (Hickman & Boruchowitz, 2014). A majority of individuals exiting prisons have serious medical and social problems (Frankish & Connor, 2012). Alcohol and drug dependency (Hickman, Roberts, & Kennedy, 2011), mental illness (Frankish & Connor, 2012), communicable disease (Hickman & Roberts, 2010), and limited educational achievement (Hickman, 2011) are common realities facing parolees.

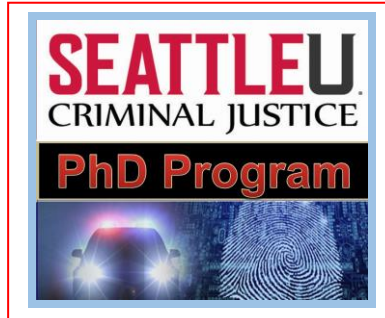
How inmate parolee parolee system across jurisdictions. To assist with understanding sentencing, it is common for judges to impose prison terms with minimum and maximum durations, and parole boards subsequently assess, review, and determine their parolee's conditional release date. However, most states rely heavily on parole judges to decide sentence lengths, and inmates are automatically released on parole supervision after

# SEATTLEU

## DEPARTMENT OF CRIMINAL JUSTICE



Other News!



- The PhDCJ Program Proposal has been submitted! Thank you to all advisory committee members for the letter of support!
- SUCJ Advisory committee member USPPS Chief Connie Smith was a featured alum in the SU Magazine!
- We have started discussions to establish collaborative programs with the University of Limerick in Ireland. University of Limerick administrators visited Seattle Spring 2016 and met with SU administrators to discuss. Special thanks to SPD Chief O'Toole for initiating this and to College of A&S Dean Powers and Father Sundborg, Acting Provost Bob Dullea, Associate Provost Russ Powell for supporting this!

**ALUMNI VOICE**

**Seeking Justice** By Annie Beckmann

Connie (Gigi) Smith, 58, 100 CSR, is the first woman to hold chief probation role

Connie (Gigi) Smith, 58, 100 CSR, remembers watching a lot of teens get into trouble when she was a teen herself.

"I wondered how I went one way and they went the other," she says.

At age 18, Smith's curiosity about why some teens ended up on the wrong side of the law nudged her to try for a job with Pierce County Juvenile Court. Her upstair hat and admiration for punk rock pioneer Joan Jett didn't do her any favors.

"I was very punked out and received the brush off. I always have had this internal hope for people who at some point took the wrong turn in life," says Smith, who today is Chief U.S. Probation and Federal Services Officer, Western District of Washington.

Her is a grapples journey with unlikely turns of her own. At various points in life, she took on roles as a bakery clerk, house cleaner and volunteer who listened and learned as she washed the hair of juvenile delinquents.

Right out of high school she enrolled at Green River Community College. When she made a second try at Pierce County Juvenile Court, she started as a volunteer—with duties that included the aforementioned hair washing—before becoming a paid aide in a variety of roles.

While a volunteer at Tacoma's Nativity House, operated by Catholic Community Services as a day shelter for the homeless, she met Joe Fortner, S.J., who was particularly instrumental in convincing her to step beyond community college to complete a bachelor's degree at Seattle University.

"I was drawn to the principles of a Jesuit Catholic, university the sense of community and values," she says.

Soon, she was working part time for the King County Prosecuting Attorney's Office as a victim advocate.

Bob Kaestner, a Seattle II criminal justice instructor who retired in 1983, says Smith

is one of a handful of students he gladly would have hired as a probation and parole officer.

"She had a good sense of presence. She was empathic, yet as objective as possible. She projected warmth and she wasn't pretentious," says Kaestner.

Within a year of graduation, Smith had launched her career in corrections as a probation officer.

Just a few years later, Smith became a federal probation officer and six years ago

*"... I always have had this internal hope for people who at some point took the wrong turn in life."*

**CONNIE (GIGI) SMITH, CHIEF U.S. PROBATION/FEDERAL SERVICES OFFICER, WESTERN DISTRICT OF WASHINGTON**

was promoted to chief—the first woman ever to hold the position in the Western district. Today she has a staff of 10 in five offices that oversee some 1500 defendants.

The neutrality of federal court pleases her. Because there's no monetary bid, defendants aren't detained based on their economic status.

"We're not there to prosecute or defend; we're there to support the judges. It's the intersection of social work, law enforcement, resource broker and the eyes and ears of the court," she says.

Typical federal court cases include bank mortgage and securities fraud, firearms and large-scale drug cases, internet crime against children and criminal investigation cases.

In not too many years, Smith faces mandatory retirement at age 57 and says it makes her feel more reflective.

"Once they start addressing substance abuse, it's amazing how their lives turn around. When you can see the big picture like that, it's very satisfying."

how much is being spent on mass incarceration that could be spent on services that could make a difference in people's lives," says Smith, who is on the executive committee for the DREAM program, offering drug programs in Western Washington to qualified defendants as alternatives to incarceration.

"Once they start addressing substance abuse, it's amazing how their lives turn around. When you can see the big picture like that, it's very satisfying."

**CRIMINAL JUSTICE RESEARCH**

Seattle University Criminal Justice graduate students, Caitie Heeling and Ray Cowles, both MACJ '16, serve as research assistants in Smith's office.

The work of Cowles and Heeling is in collaboration with SU Criminal Justice Chair Jacqueline Holligan and Associate Professor Elaine Gusterson to reform criminal justice practice for those under federal supervision in pretrial, probation and post conviction.

"Our research assistants bring a fresh perspective to corrections. Their intellect, skills, character and belief in changing lives complements our organizational goals and helps us understand our work through a new lens," says Smith.

The work has inspired Heeling to consider a career in corrections.

"The realising how much impact you can have on a person's life," Heeling says. "Connie has been an amazing mentor, always willing to help us with our current positions and future careers. I'm so grateful for the opportunity to work with and learn from her and all the probation officers in the district."

PHOTO BY JOHN LOK

SU Magazine Spring 2016 / 31



## New Advisory Committee Members/Agencies in 2016 and Farewells

### *Farewell and Good Luck and THANK YOU!*

David Rodriguez, Executive Director, NW HIDTA  
Jennifer Shaw, Executive Director, ACLU  
Greg Hewett, Health Services Administrator, KCMEO  
Sandra Sherlock, Senior Operations Officer, ATF

### *New members to the advisory committee for 2016-17:*

Mark Cooke, Policy Director, ACLU  
Kelvin Crenshaw, ATF SAC (Retired) Returning!  
Craig Birklid, Interim Director, Seattle University Public Safety  
Greg Gardner, Executive Director, Interaction Transition  
Dan Pacholke, Senior Research Scholar, New York University Litmus at Marron Institute of Urban Mgmt  
Lisa Daugarrd, Director, Public Defender Association  
Linda Spain, Executive Director, Seattle Neighborhood Group  
Carmen Best, Assistant Chief, Seattle Police Department  
Adrian Diaz, Lieutenant, *Community Outreach*, Seattle Police Department  
Victor Maes, Officer, *West Precinct/ Neighborhood Corrections Initiative (NCI)*, Seattle Police Department  
Daniel Nelson, Sergeant, *CIT Coordinator*, Seattle Police Department  
Kim Bogucki, Detective, *IF Project*, Seattle Police Department  
Leslie Mills, NW CRU Field Supervisor, *Neighborhood Corrections Initiative (NCI)*, WA State DOC  
Jody Becker-Green, Deputy Secretary, *WA State Department of Corrections*  
Paige Harrison, Director of Research and Data Analytics, *WA State Department of Corrections*  
Jeffrey Landon, Senior Administrator, *Offender Change Division*, *WA State Department of Corrections*  
Amy Turi, Associate Superintendent, *Echo Glen/DSHS*  
Carmen Rivera, Juvenile Rehabilitation Coordinator, *Echo Glen/DSHS*  
Collin Porter, President, *Seattle University Criminal Justice Club*  
Mon-Cherie Barnes, Graduate Representative A&S Graduate Student Council  
Jessica Chandler, Graduate Representative A&S Graduate Student Council  
Yanci Reyes, Corr Scholar 2016-17  
Pua Savusa, Graduate Representative A&S Graduate Student Council  
Brooke Bray, Blume Criminal Justice Scholar (Graduate) 2016-17  
Ellary Collins, Blume Criminal Justice Scholar (Undergraduate) 2016-17  
Gloria Lara, Graduate Representative A&S Graduate Student Council

**SEATTLE**

DEPARTMENT OF CRIMINAL JUSTICE



### *SU CJ Faculty*

- **Peter Collins, PhD/Assistant Professor**  
*Research/teaching interests in policy/program evaluation, criminal justice organizations, statistics, and criminal law.*
- **David Connor, PhD/Assistant Professor**  
*Research/teaching interests in sex offenders and sex offender registration, social deviance, corrections, and reentry*
- **Elaine Gunnison, PhD/Associate Professor**  
*Research/teaching interests in life course criminology, female offending patterns, comparative criminal justice, and corrections.*
- **Jacqueline B. Helfgott, PhD/Professor, Chair**  
*Research/teaching interests in criminal behavior, psychopathy, copycat crime, offender reentry, corrections, criminal justice and mental health, and community/restorative justice.*
- **Matthew Hickman, PhD/Assistant Professor**  
*Research/teaching interests in police integrity and ethics, criminal justice decision-making, quantitative methods, criminological theory.*
- **William Parkin, PhD, Assistant Professor**  
*Research/teaching interests in domestic extremism and terrorism, homicide victimization, media and criminal justice, and mixed methods research.*
- **Stephen Rice, PhD/Assistant Professor**  
*Research/teaching interests in procedural and restorative justice, race/ethnicity and justice, terrorism, the social psychology of punishment, and criminological theory.*

### *Adjunct Faculty/Instructors*

- **Stacy Cecchet, PhD, Forensic Psychologist**
- **Darlene Conley, PhD; Sociologist-Criminologist/Ethnographer**
- **Colleen Cummings, PhD, Anthropologist**
- **Debi Dorfsman, JD, Supervisory Intelligence Analyst, FBI**
- **Tag Gleason, MA, JD; Captain, Seattle Police Department**
- **Virginia Gleason, JD.; Strategic Advisor, Seattle Police Department**
- **Bonnie Glenn, JD, Seattle University Law School Access to Justice**
- **Chris Fowler, MA, Captain, Seattle Police Department**
- **Bev Himick, PhD; Forensic Scientist/DNA Unit Supervisor, WA State Patrol Crime Lab**
- **Collen Ingalls, MA, Victim Support Services**
- **Trisha King-Stargel, EdD, King County Sheriff's Office**
- **Doug Larm, MS, Intelligence Analyst, Seattle Police Department**
- **Shannon Meyer, PhD, Victim Specialist, FBI**
- **Richard Niebush, PhD, Snohomish County Sheriff's Office**
- **Al O'Brien, MA; Representative, 1<sup>st</sup> Legislative District, Washington State Legislature, Ret. Sergeant SPD**
- **Mac Pevey, MA; Administrator, WA State Department of Corrections**
- **Ed Reed, PhD; Lecturer/Seattle University Matteo Ricci College**
- **Henry Richards, PhD; Superintendent, Special Commitment Center, WA State Dept. of Social & Health Services (Ret.)**
- **Carmen Rivera, MSc, Echo Glen, WA State Dept. of Social & Health Services**
- **John Vinson, PhD, Chief, University of Washington Police**
- **Riva Zeff, MSW; Clinical Director/SU Social Work Program**



*NEXT MEETINGS – MARK YOUR CALENDARS!*

Mid-Year Meeting -- January 13, 2017 8-10am, Casey Commons

2017 Annual Luncheon -- September 29, 2017, STN 160

**SEATTLEU**

DEPARTMENT OF CRIMINAL JUSTICE