

Sullivan Classroom - 328

All Sullivan Hall classrooms come equipped with standardized technology interfaces.

Find Touch Screen on Podium

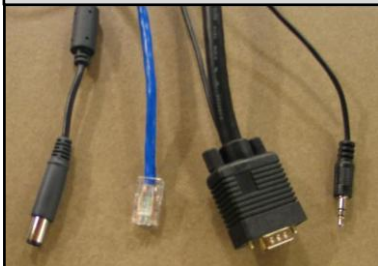


Touch this Screen to begin.



Connect Laptop cables.

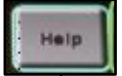
1. Power for Dell laptops.
2. Ethernet / internet
3. VGA for projection (Mac users will need adapter)
4. Audio (headphone) Out



To route a device to the projector, Press the **"Projector"** button next to it. (This also **turns on projector**, lowers screen, and adjusts lights.)

To preview the device on podium LCD, press **"Monitor"**. This does not route anything to the projector.

Press **HELP** for emergencies.

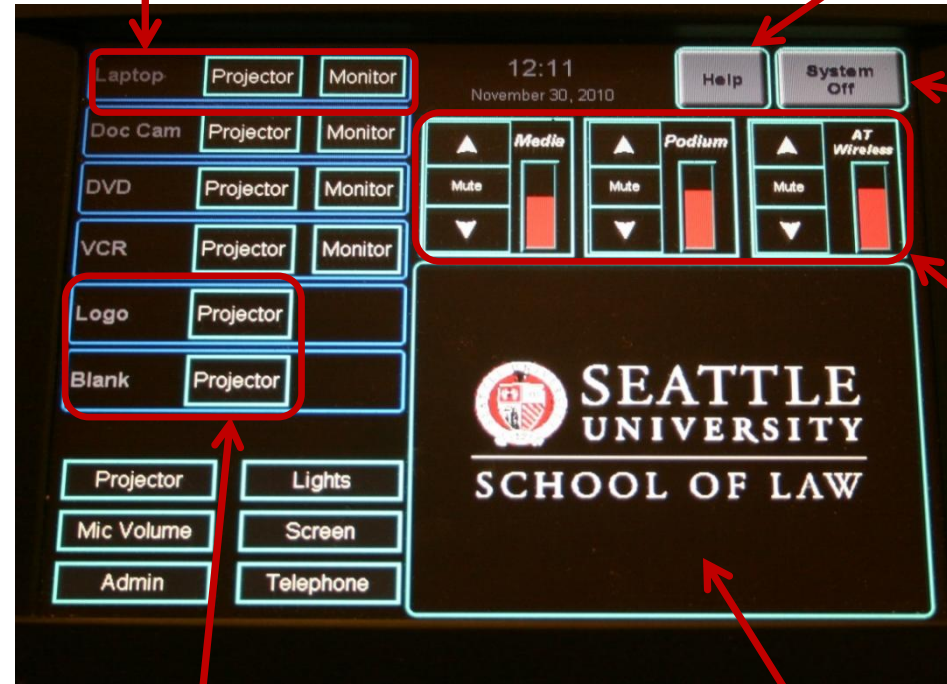


This can be used to call Campus Security by phone.

Press **"System Off"** when you leave. This shuts down everything.

Volume Controls:
Media = VHS/DVD and Laptop
Podium = fixed mic
Wireless = clip-on Mic (ask your admin for keys to cabinet)

Document Reader Controls:
AF = Autofocus
Rotate = rotates 90°
Brightness = Adjust contrast
Lamp = turns light on/off



Use **Logo** to Route SU log on screen.
 Use **Blank** to stop projecting, but leave projector on.

Device controls will appear in this window.

For Technology Help: call x4444